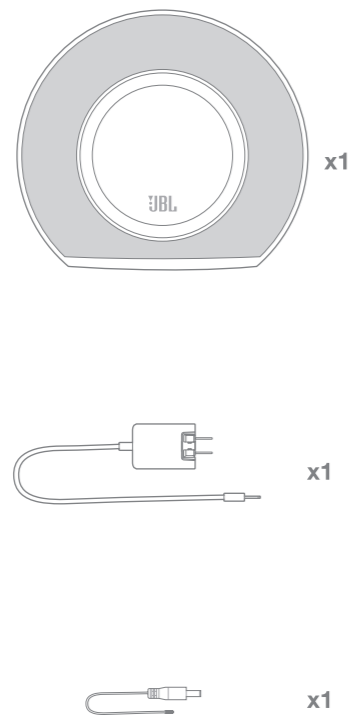




Horizon

Quick Start Guide
Guide de démarrage rapide

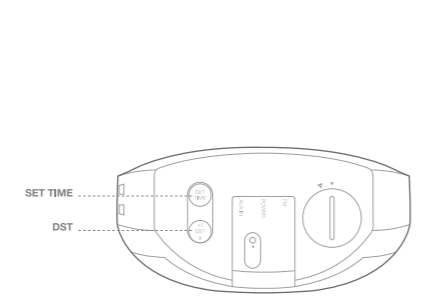
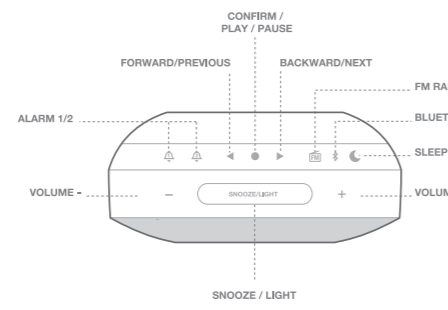
1 What's in the box



Horizon

Quick Start Guide
Guide de démarrage rapide

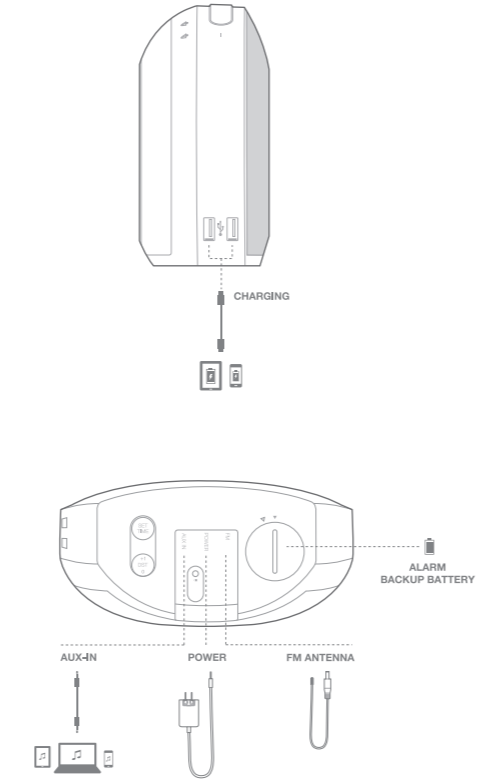
2 Buttons



Horizon

Quick Start Guide
Guide de démarrage rapide

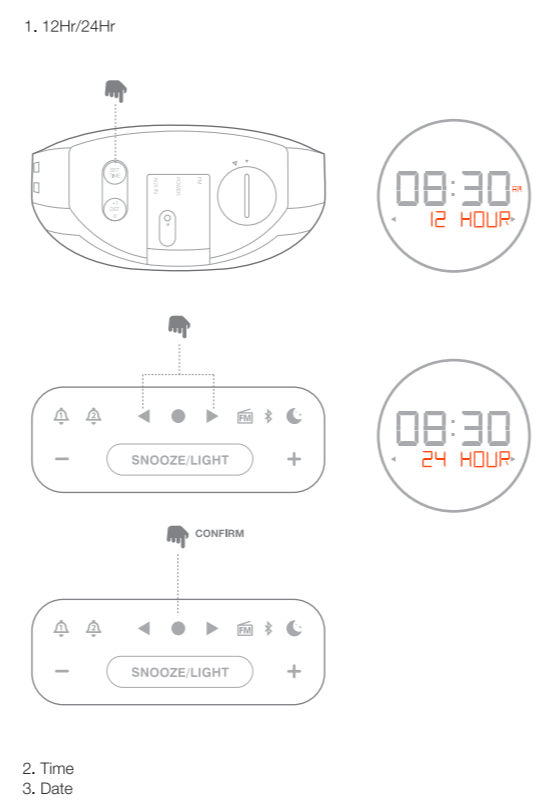
3 Connections



Horizon

Quick Start Guide
Guide de démarrage rapide

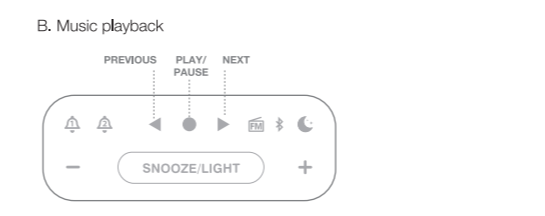
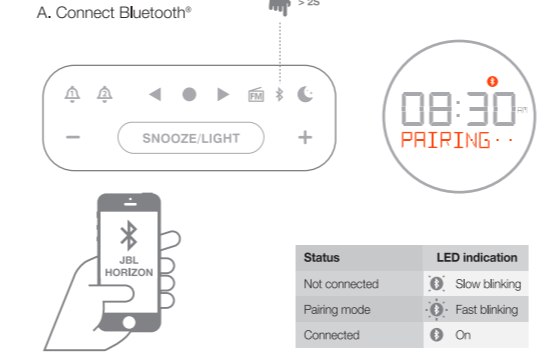
4 Set Time



Horizon

Quick Start Guide
Guide de démarrage rapide

5 Bluetooth



Horizon

Quick Start Guide
Guide de démarrage rapide

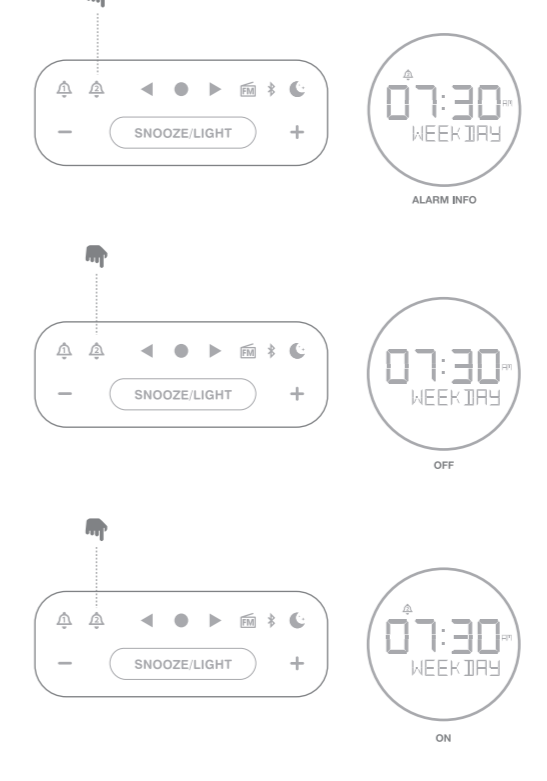
7 Alarm



Horizon

Quick Start Guide
Guide de démarrage rapide

8 Ringing



Horizon

Quick Start Guide
Guide de démarrage rapide

9 Sleep mode



Horizon

Quick Start Guide
Guide de démarrage rapide

10 Alarm 1 / Alarm 2 / Alarm 1 and 2



Horizon

Quick Start Guide
Guide de démarrage rapide

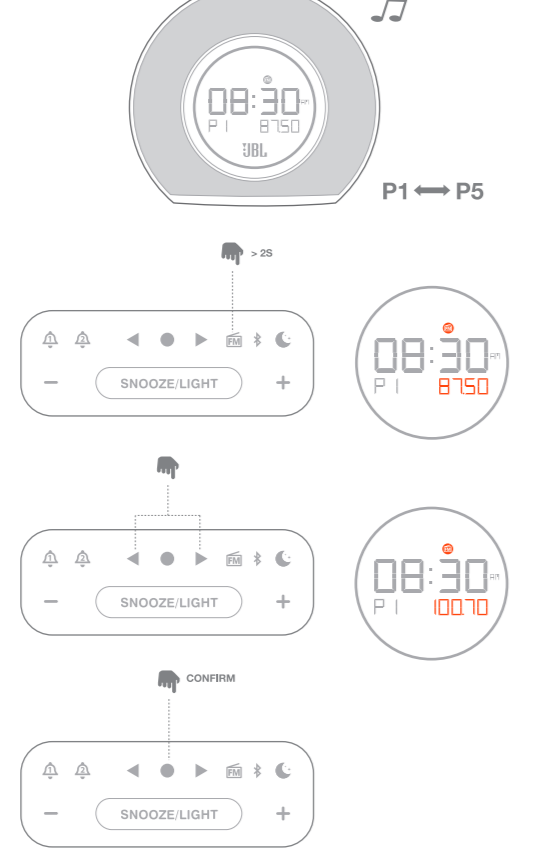
8 FM Radio



Horizon

Quick Start Guide
Guide de démarrage rapide

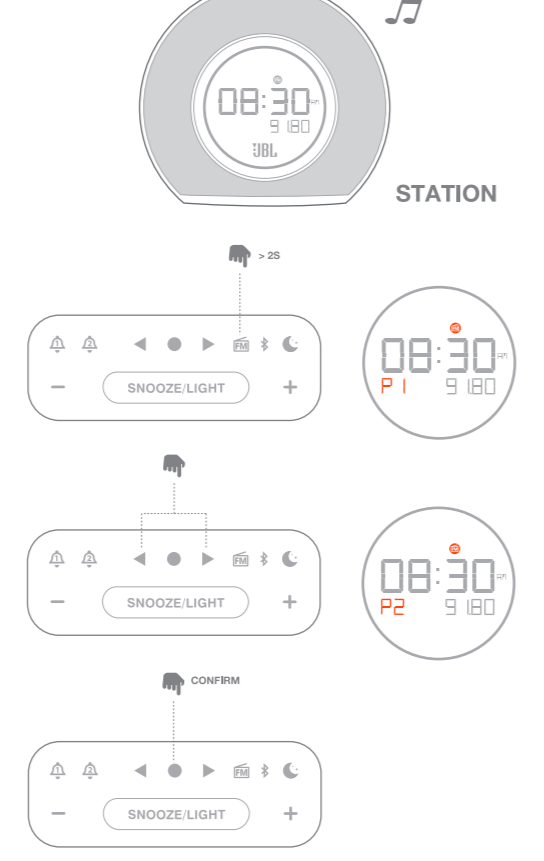
E. Set preset station



Horizon

Quick Start Guide
Guide de démarrage rapide

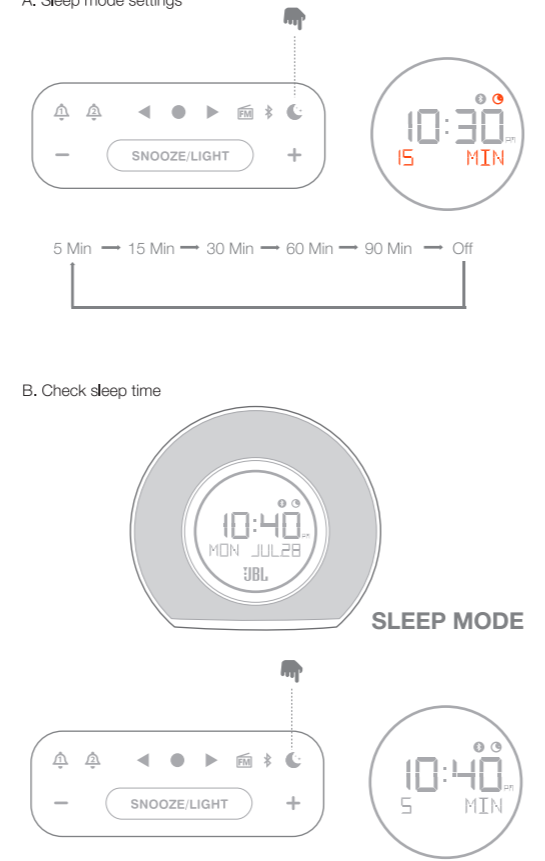
F. Save as preset



Horizon

Quick Start Guide
Guide de démarrage rapide

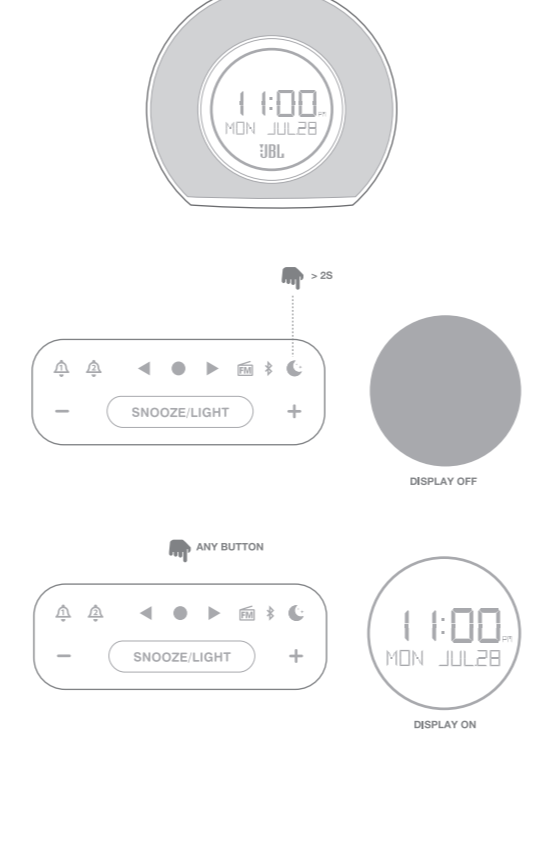
9 Sleep mode



Horizon

Quick Start Guide
Guide de démarrage rapide

10 Display on / off



Horizon

Quick Start Guide
Guide de démarrage rapide

EN

- Bluetooth® version: 4.1
- Support: A2DP V1.2, AVRCP V1.0
- Transducer: 2 x 45mm
- Rated power input: 2 x 5W
- Frequency response: 70Hz - 20kHz
- Max SPL: 82.5dB (81m)
- Power adaptor: 13VDC, 2.2A
- USB output: 5V, 1A (max.) x 2
- FM frequency: 76 - 108 MHz (Receiving ranges vary by region)
- Bluetooth® transmitter power: 0-4 dBm
- Bluetooth® transmitter frequency range: 2,402 - 2,480 GHz
- Bluetooth® transmitter modulation: GFSK, n/4 DQPSK, 8DPSK
- Dimensions (H x L x P): 162 x 183 x 81 (mm)
- Weight: 890 g

ES

- Versión Bluetooth®: 4.1
- Compatibilidad: A2DP V1.2, AVRCP V1.0
- Transductor: 2 x 45 mm
- Potencia de entrada nominal: 2 x 5 W
- Intervalo de frecuencias: 70 Hz - 20 kHz
- Nivel máximo de SPL: 82,5 dB (81 m)
- Adaptador de alimentación: 13 V CC, 2,2 A
- Salida USB: 5 V, 1 A (máx.) x 2
- Frecuencia FM: 76 - 108 MHz (los intervalos de recepción dependen de la región)
- Potencia del transmisor Bluetooth®: 0 - 4 dBm
- Alcance de frecuencia del transmisor Bluetooth®: 2,402 - 2,480 GHz
- Modulación del transmisor Bluetooth®: GFSK, n/4 DQPSK, 8DPSK
- Dimensiones (A x L x P): 162 x 183 x 81 (mm)
- Peso: 890 g

FR

- Versión Bluetooth®: 4.1
- Support: A2DP V1.2, AVRCP V1.0
- Transducteur: 2 x 45 mm
- Puissance nominale d'entrée: 2 x 5 W
- Reponse de fréquence: 70 Hz - 20 kHz
- Niveau maximum de SPL: 82,5 dB (81 m)
- Adaptateur de alimentation: 13 V CC, 2,2 A
- Sortie USB: 5 V, 1 A (max.) x 2
- Fréquence FM: 76 - 108 MHz (les bandes de réception varient selon la région)
- Puissance de l'émetteur Bluetooth®: 0 - 4 dBm
- Plage de fréquences de l'émetteur Bluetooth®: 2,402 - 2,480 GHz
- Modulation de l'émetteur Bluetooth®: GFSK, n/4 DQPSK, 8DPSK
- Dimensions (H x L x P): 162 x 183 x 81 (mm)
- Poids: 890 g

PT

- Versão Bluetooth®: 4.1
- Compatibilidade: A2DP V1.2, AVRCP V1.0
- Transdutor: 2 x 45 mm
- Potência nominal de entrada: 2 x 5 W
- Intervalo de frequências: 70 Hz - 20 kHz
- Nível máximo de SPL: 82,5 dB (81 m)
- Adaptador de alimentação: 13 V CC, 2,2 A
- Saída USB: 5 V, 1 A (máx.) x 2
- Frequência FM: 76 - 108 MHz (os intervalos de recepção variam de acordo com a região)
- Potência do transmissor Bluetooth®: 0 - 4 dBm
- Intervalo de frequência do transmissor Bluetooth®: 2,402 - 2,480 GHz
- Modulação do transmissor Bluetooth®: GFSK, n/4 DQPSK, 8DPSK
- Dimensões (A x L x P): 162 x 183 x 81 (mm)
- Peso: 890 g

NL

- Bluetooth®-versie: 4.1
- Ondersteuning: A2DP V1.2, AVRCP V1.0
- Transducer: 2 x 45mm
- Nominiaal opgenomen vermogen: 2 x 5 W
- Frequentiebereik: 70Hz - 20kHz
- Max SPL: 82,5dB (81m)
- Voedingadapter: 13VDC, 2,2A
- USB-uitgang: 5V, 1A (max.) x 2
- FM-Frequentie: 76 - 108 MHz (ontvangstbereik verschilt per regio)
- Bluetooth®-zendervermogen: 0-4 dBm
- Bluetooth®-zenderfrequentiebereik: 2,402 - 2,480 GHz
- Modulatie voor Bluetooth®-zender: GFSK, n/4 DQPSK, 8DPSK
- Afmetingen (B x H x L): 162 x 183 x 81 (mm)
- Wekt: 890 g

NO

- Bluetooth®-versjon: 4.1
- Støtte: A2DP V1.2, AVRCP V1.0
- Transducer: 2 x 45mm
- Nominell opptatt effekt: 2 x 5 W
- Frekvensrespons: 70Hz - 20kHz
- Max SPL: 82,5dB (81m)
- Strømforsyning: 13V DC, 2,2A
- USB-utgang: 5V, 1A (maks.) x 2
- FM-Frekvens: 76 - 108 MHz (mottaksområde varierer etter region)
- Bluetooth®-sändareffekt: 0-4 dBm
- Bluetooth®-sändareffekt: 2,402 - 2,480 GHz
- Modulering for Bluetooth®-sänder: GFSK, n/4 DQPSK, 8DPSK
- Mål (H x B x D): 162 x 183 x 81 (mm)
- Vekt: 890 g

SV

- Bluetooth®-version: 4.1
- Stöd: A2DP V1.2, AVRCP V1.0
- Element: 2 x 45mm
- Nominell effektuttag: 2 x 5 W
- Frekvensområde: 70 Hz - 20 kHz
- Max SPL: 82,5 dB (81 m)
- Strömförsörjning: 13 V DC, 2,2 A
- USB-utgång: 5 V, 1 A (max.) x 2
- FM-frekvens: 76 - 108 MHz (mottagningsområde varierar efter region)
- Bluetooth®-sändareffekt: 0-4 dBm
- Bluetooth®-sändareffekt: 2,402 - 2,480 GHz
- Modulering för Bluetooth®-sändare: GFSK, n/4 DQPSK, 8DPSK
- Mått (H x B x D): 162 x 183 x 81 (mm)
- Vikt: 890 g

DA

- Bluetooth®-version: 4.1
- Understøttelse: A2DP V1.2, AVRCP V1.0
- Transducer: 2 x 45mm
- Nominel effektindput: 2 x 5 W
- Frekvensområde: 70 Hz - 20kHz
- Max SPL: 82,5 dB (81 m)
- Strømforsyning: 13 V DC, 2,2 A
- USB-udgang: 5 V, 1 A (maks.) x 2
- FM-frekvens: 76 - 108 MHz (modtagelsesområdet varierer afhængigt af region)
- Bluetooth®-sändareffekt: 0-4 dBm
- Bluetooth®-sändareffekt: 2,402 - 2,480 GHz
- Modulering for Bluetooth®-sändere: GFSK, n/4 DQPSK, 8DPSK
- Mål (H x B x D): 162 x 183 x 81 (mm)
- Vægt: 890 g

RU

- Версия Bluetooth®: 4.1
- Поддержка: A2DP V1.2, AVRCP V1.0
- Преобразователь: 2 x 45 мм
- Номинальная потребляемая мощность: 2 x 5 Вт
- Эффективный рабочий диапазон частот: 70 Гц - 20 кГц
- Макс. уровень звукового давления: 82,5 дБ (81 м)
- Адаптер питания: 13 В DC, 2,2 А
- USB-выход: 5 В, 1 А (макс.) x 2
- Диапазон FM: 76 - 108 МГц (диапазон приема может зависеть от региона)
- Мощность передатчика Bluetooth®: 0 - 4 дБм
- Частотный диапазон передатчика Bluetooth®: 2,402 - 2,480 ГГц
- Модуляция передатчика Bluetooth®: GFSK, n/4 DQPSK, 8DPSK
- Размеры (В x Ш x Г): 162 x 183 x 81 мм
- Вес: 890 г

JP

- Bluetooth®バージョン: 4.1
- 対応: A2DP V1.2, AVRCP V1.0
- トランスデューサー: 2 x 45mm
- 消費電力: 2 x 5W
- 有効動作周波数: 70Hz ~ 20kHz
- 最大音圧レベル: 82.5dB (81m)
- 電源アダプター: 13VDC, 2.2A
- USB出力: 5V, 1A (最大) x 2
- FM周波数: 76~108 MHz (受信範囲は地域により異なります)
- Bluetooth®トランスミッター出力: 0~4 dBm
- Bluetooth®トランスミッター周波数帯域: 2,402~2,480 GHz
- Bluetooth®トランスミッター変調: GFSK, n/4 DQPSK, 8DPSK
- 寸法 (高さ x 幅 x 奥行き): 162mm x 183mm x 81mm
- 重量: 890 g

CHS

- 蓝牙版本: 4.1
- 支持: A2DP V1.2, AVRCP V1.0
- 扬声器: 2 x 45mm
- 额定功率输出: 2 x 5W
- 频率范围: 70Hz - 20kHz
- 最大 SPL: 82.5dB (81m)
- 电源适配器: 13VDC, 2.2A
- USB 输出: 5V, 1A (最大) x 2
- FM 频率: 76 - 108 MHz (接收范围因地区而异)
- 蓝牙发射功率: 0-4 dBm
- 蓝牙发射频率范围: 2,402 - 2,480 GHz
- 蓝牙发射调制: GFSK, n/4 DQPSK, 8DPSK
- 尺寸 (高 x 宽 x 深): 162 x 183 x 81 (mm)
- 重量: 890 g

CHT

- Bluetooth® 版本: 4.1
- 支援: A2DP V1.2, AVRCP V1.0
- 揚聲器: 2 x 45mm
- 額定功率輸出: 2 x 5W
- 頻率範圍: 70Hz - 20kHz
- 最大 SPL: 82.5dB (81m)
- 電源适配器: 13VDC, 2.2A
- USB 輸出: 5V, 1A (最大) x 2
- FM 頻率: 76 - 108 MHz (接收範圍因地區而異)
- Bluetooth® 發射機功率: 0-4 dBm
- Bluetooth® 發射機頻率範圍: 2,402 - 2,480 GHz
- Bluetooth® 發射機調製: GFSK, n/4 DQPSK, 8DPSK
- 尺寸 (高 x 寬 x 深): 162 x 183 x 81 (mm)
- 重量: 890 g

Horizon

Quick Start Guide
Guide de démarrage rapide

10



ANATEL Agência Nacional de Automação

Este equipamento opera em caráter secundário, isto é, não tem direito a proteção contra interferência prejudicial, mesmo de estações do mesmo tipo, e não pode causar interferência a sistemas operando em caráter primário

Para maiores informações, consulte o site da ANATEL - www.anatel.gov.br

(01)07896359534821

CE0560

080-997-039